

# DSI ENGINEERING– METAL RECYCLING PLANT

## JAW CRUSHER SUPPORT STAND [W10229]

- CHALLENGE:** (1) Design a support stand for a jaw crusher intended for metal reduction on a very short timeline  
 (2) The short timeframe required that the design process start before the receipt of all relevant dimensional constraints and load data
- SOLUTION:** Because of the urgency of the request, DSI made conservative assumptions to initiate the design process

**Time-Critical**



**DEADLINE**

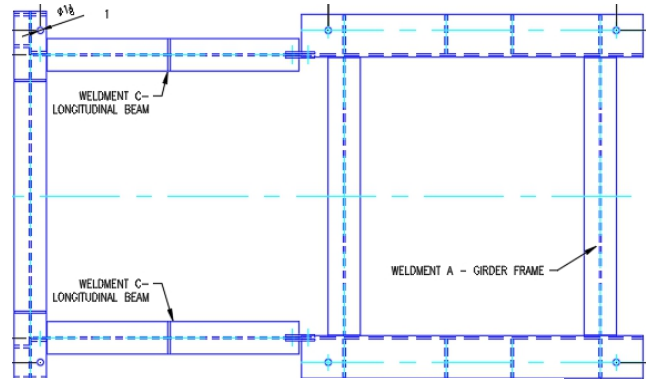


**Engineering SOLUTIONS**

DSI was tasked with the design and supply of a support stand for a new jaw crusher. The urgency of the project required that the design process begin prior to receipt of complete data.

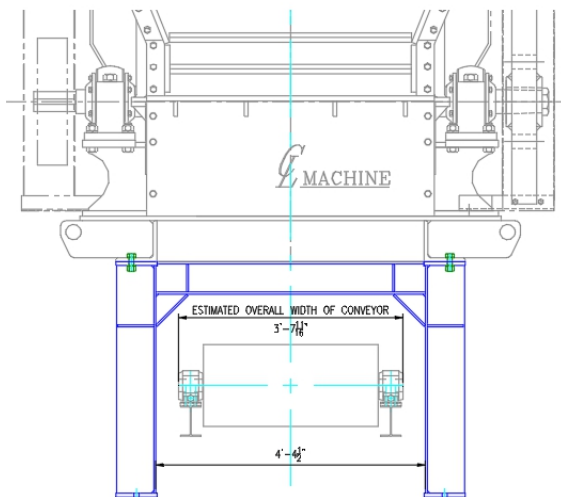
DSI applied conservative values to populate

unknown dimensional constraints and load measurements based upon industry and operational expertise. This allowed the design process to continue without delay.

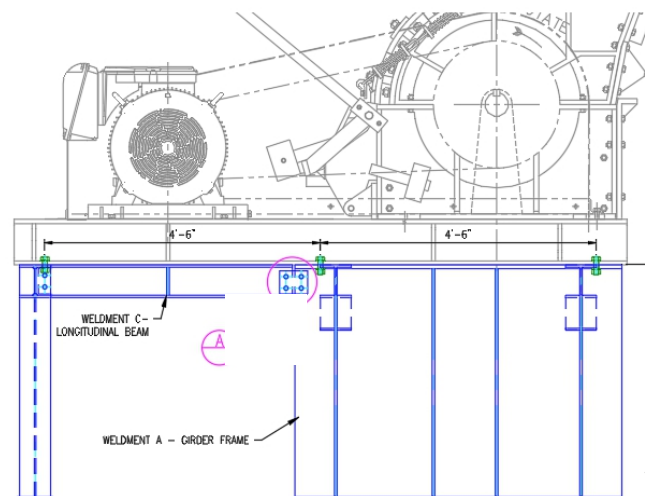


**Figure 1: Plan View – Crusher Stand**

DSI then collaborated with field personnel and the crusher equipment supplier to obtain access to the proper information for design completion. Revisions were made to initial designs in the case of conflicting prior assumptions. As a result of DSI’s efforts and teamwork with the selected fabricator, the jaw crusher support stand was delivered in the required timeframe and with excellent quality.



**Figure 2: Elevation View – Crusher Stand**



**Figure 3: Side View – Crusher Stand**